



A Portfolio of High Value, Easy
to Implements Solutions



Topics



Executive Summary



Appendix- Solution Overview



Appendix - Market Positioning



Appendix - Value to Partners, Distributors, SIs & Customers

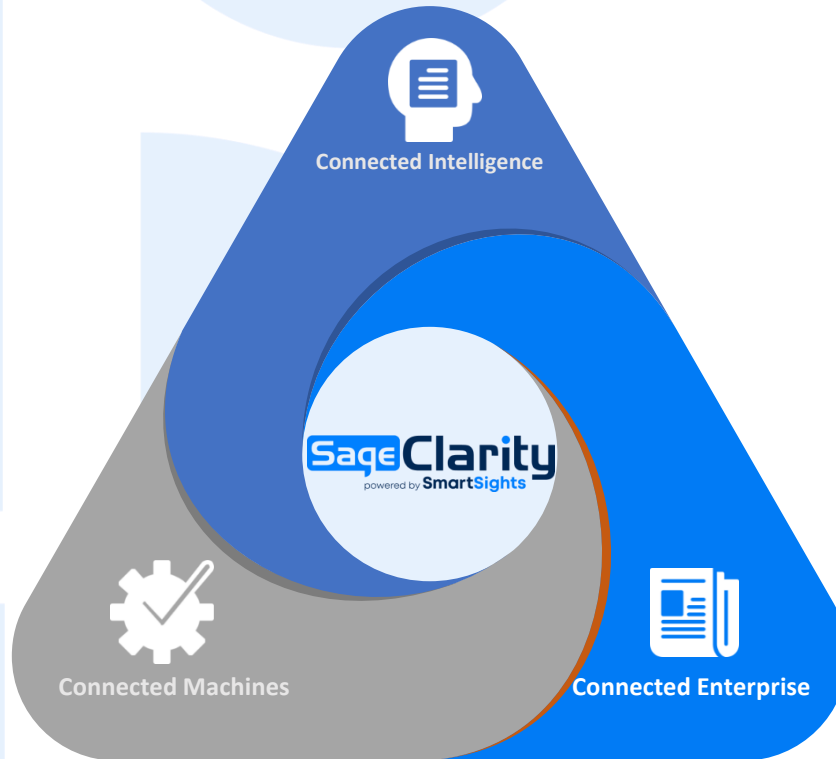


Solution and Commercial Update: WIN-911 and XLReporter

Sage Clarity Industry 4.0 Accelerator Apps now part of a broader Smartsights vision...



Industry 4.0 Accelerator Apps for Digital Transformations



01

PEER - Next-Gen ANDON – Issue Management accelerator

Intelligent alarms, alerts, and engineer-to-operator collaboration in real-time

02

One View – Analytics accelerator for production intelligence

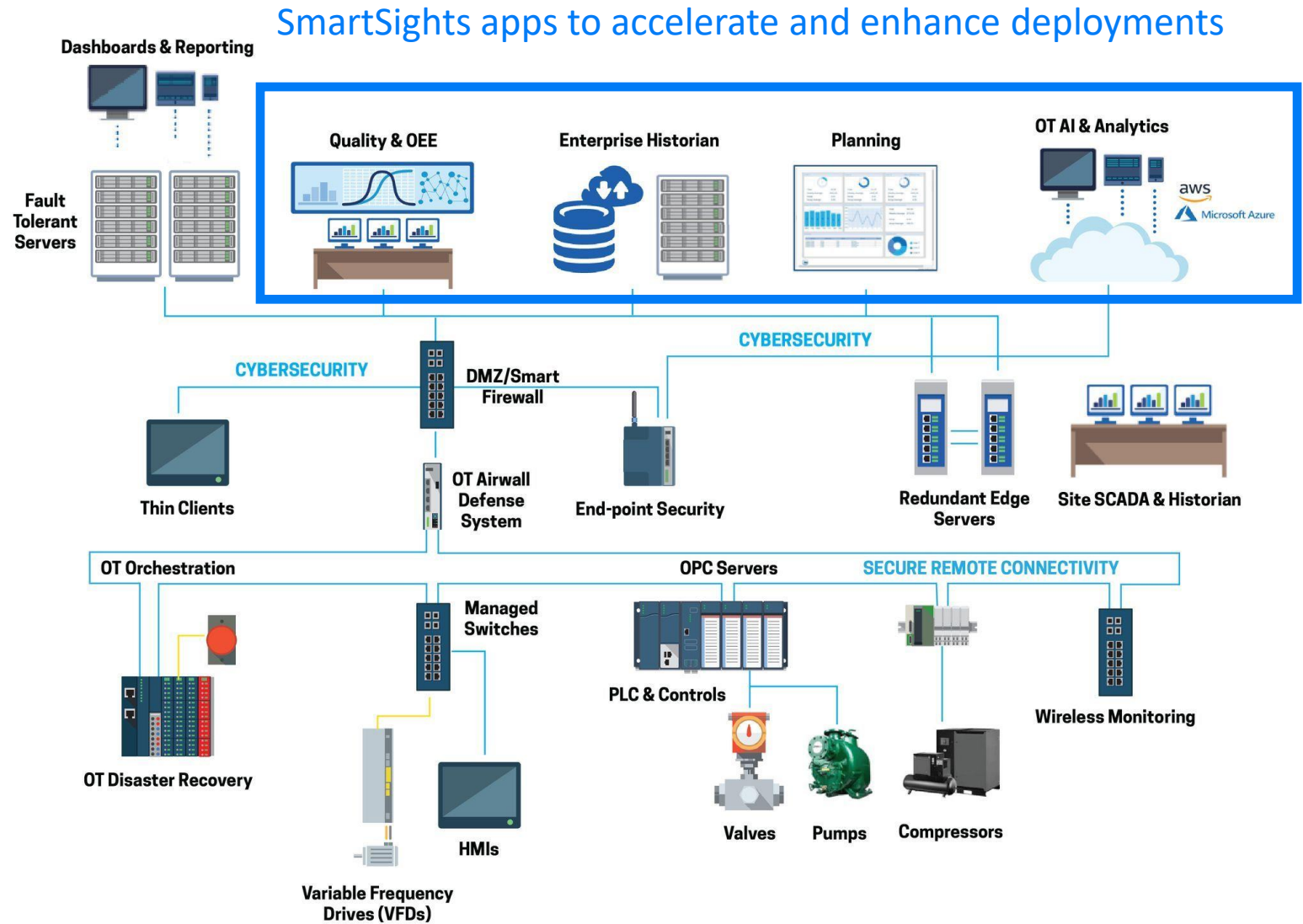
Manufacturing Intelligence on the Cloud

03

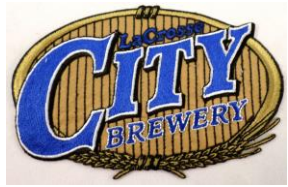
ABLE – Data collection accelerator with logic at the edge

Machine Monitoring and beyond

Supporting CB Pacific with Accelerator apps



Clients Around the World: Food & Beverage Clients



Jose Cuervo

Walmart

ConAgra Foods
Food you love



Lamb Weston
SEEKING POSSIBILITIES IN POTATOES

Trident
SEAFOODS



WEST LIBERTY
FOODS
EST. 1996
SIGNATURE PROTEINS

Tito's



Handmade
VODKA
AUSTIN TEXAS



TreeHouse

Consumer Packaged Goods

DIAGEO

G&J pepsi

Henkel



Unilever



The Clorox
Company



WISOPAK

RICH'S

Aerospace and Automotive

KAMAN MATCOR

STOREMASTA[®] BLUE ORIGIN

PMD
PERRY MACHINE & DIE

Allied Motion

Pharma and Medical Device

INTUITIVE
SURGICAL[®]

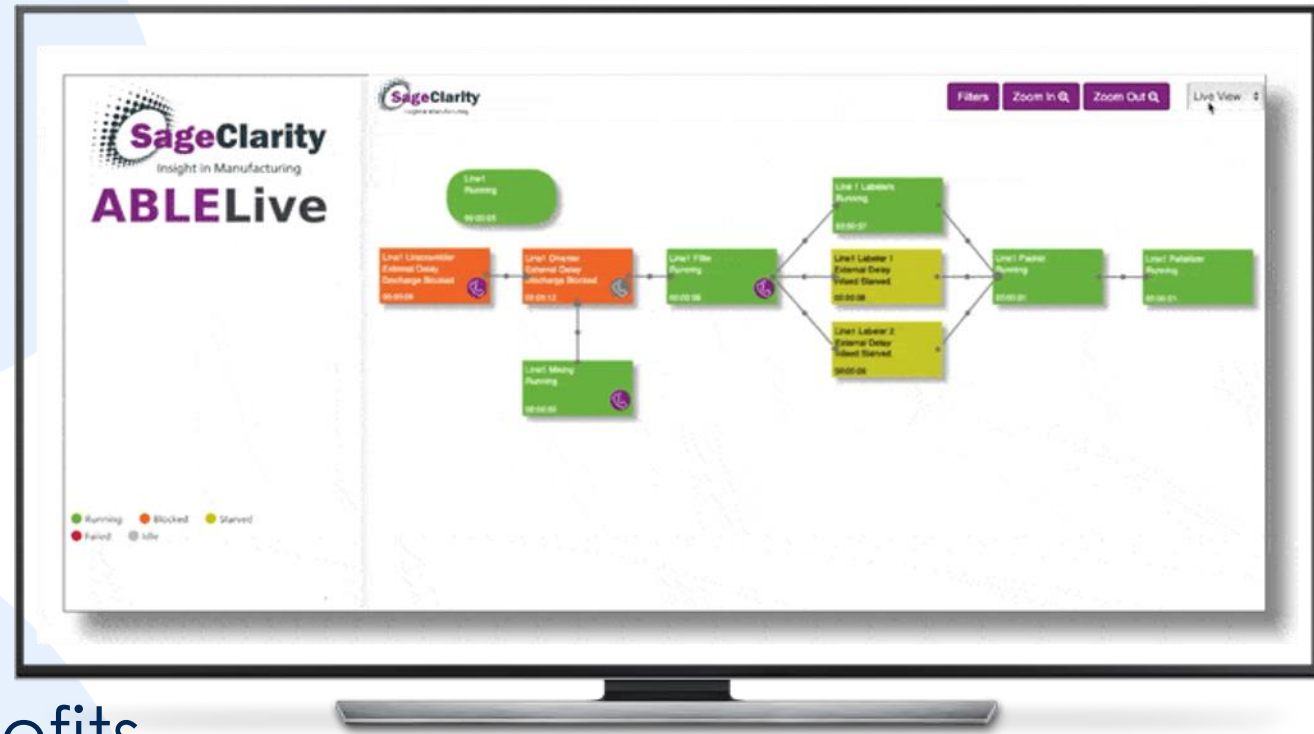
Reckitt
Benckiser

COOK
MEDICAL

Hollister

SHOCKWAVE
MEDICAL INC

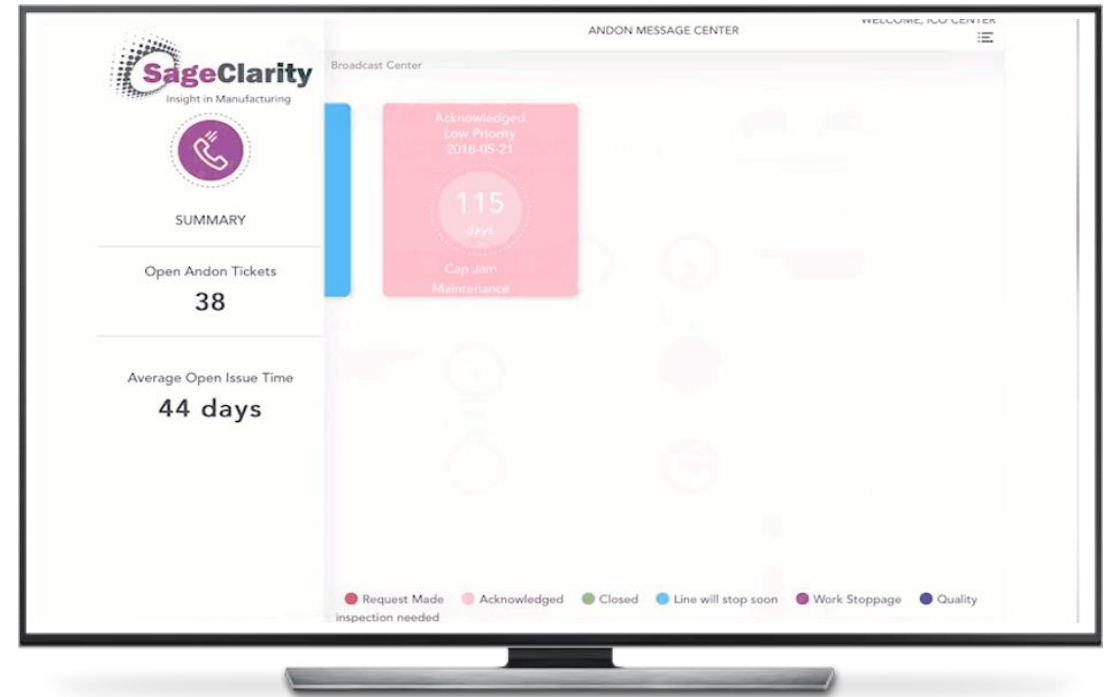
ABLE™ Data Collection Accelerator with Logic at the Edge



Key Capabilities & Benefits

- Modular modeling of machine centers, each with advanced logic engine to determine state
- Models line flow for intelligent root cause analysis
- Supports a corporate PLC standardization strategy
- Simplifies data acquisition & control architectures
- Enterprise configurations that can be copied from line to line and plant to plant
- Improves Fidelity of data by 5X
- Reduces integration costs up to 70%

PEER™ Issue resolution Accelerator



- Capture issues and set priorities
- Trigger alerts for responsive action
- Create follow up with accountability and workflow to insure resolution
- Connect issues with systems
- Build a knowledge base of corrective actions
- Tightly integrated with Win911

A powerful API library for a variety of systems

- ERP systems
- MES systems
- SCADA systems
- Maintenance & Quality systems
- Panel views, HMIs, etc.

One View™ Analytics Accelerator for Production Intelligence



- Key Capabilities

- Enterprise roll up across sites
- Drill down by plant / line
- YTD, MTD, WTD reporting
- “Mobile First” design
- Metric apps for OEE, OTIF, Quality, etc.

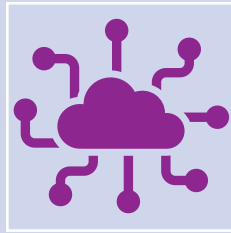


- Fills the mobile strategy for manufacturing companies
- Can be configured as a Single app or as multiple apps
- Can be used to bring real-time visibility to key manufacturing metric

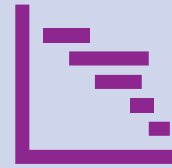
Quick Facts – Deployment Success



7,000,000 TRANSACTIONS PER DAY



OVER 1,000 PRODUCTION LINES

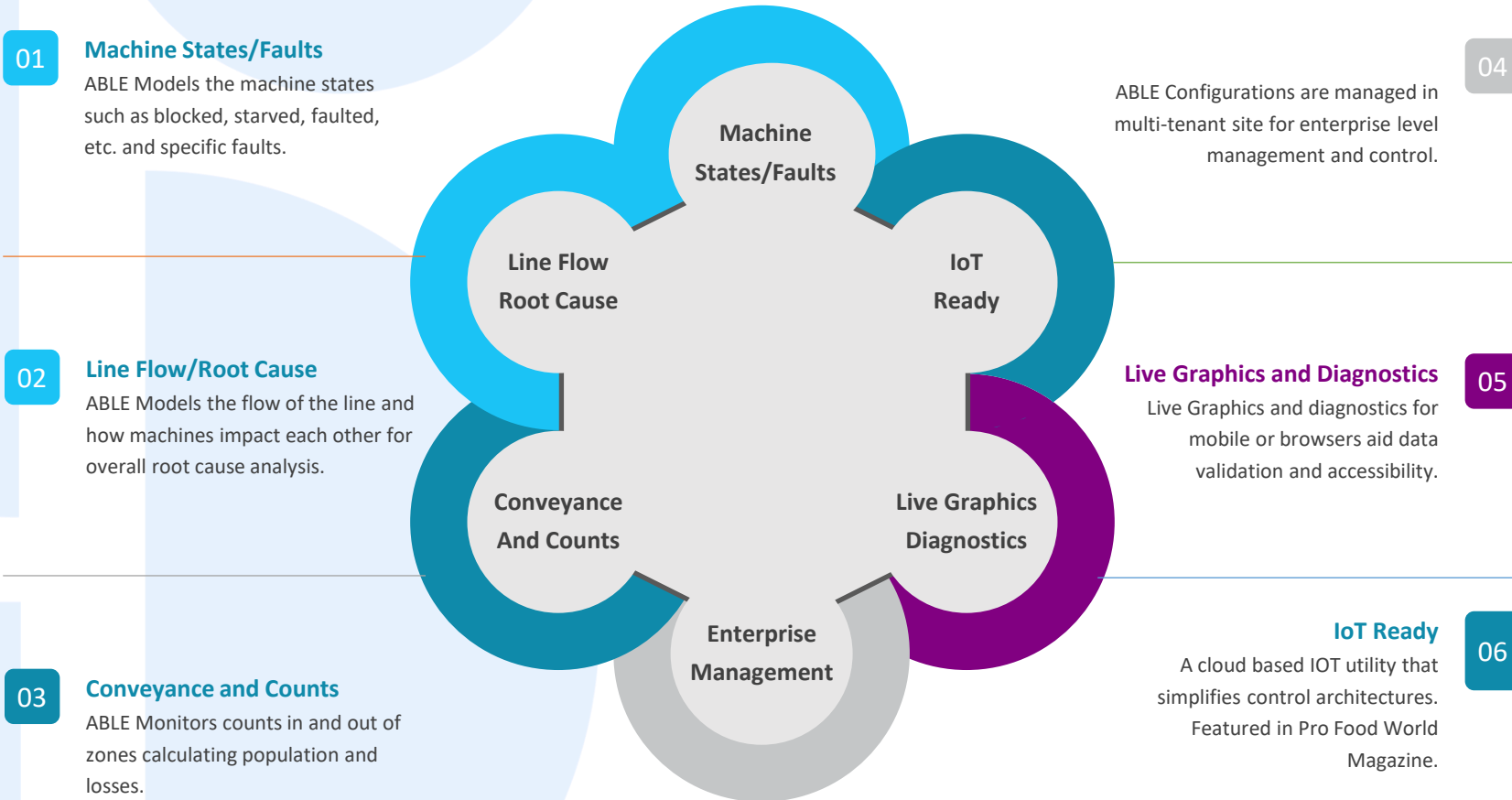


MULTIPLE ENTERPRISE DIGITAL
TRANSFORMATION DEPLOYMENTS

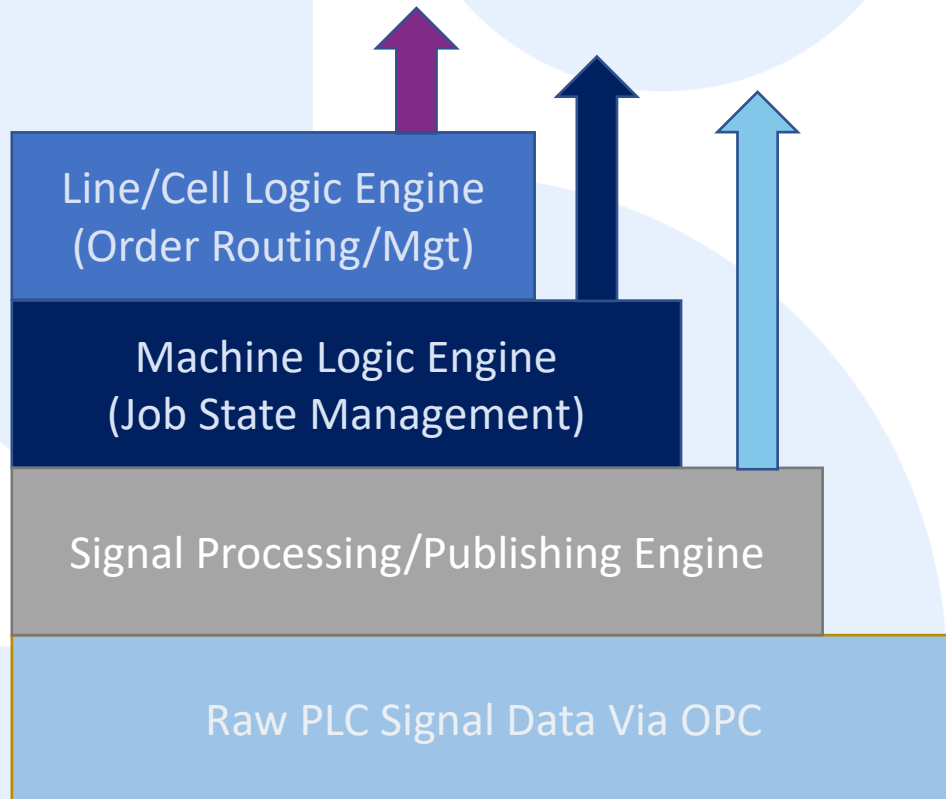
Appendix – Solution Overview



ABLE IOT - Supercharge MES Deployments with Intelligent Root Cause Analysis



ABLE Is... Optimized Data From the Edge



Logic engine for line/process flows to model cause-effect relationships between machines, plan downtime mgt.

Logic engine for machines, unit operations to coalesce state, internal/external delays, faults, counts.

Real-time signal conditioning and integrity checking with pre-processors for arrays, analog signals, instruments.

High speed data acquisition of raw signals including counts, interlocks, faults and other pertinent tags.

ABLE Digital Twin™

Digital Replay for data validation

- Ability to create Digital Twins from real-time manufacturing data
- Fast forward / rewind / pause through production sequences
- Multiple data streams replayed in sync
- Use for production line modeling with more accurate representations of performance
- Diagnose problems. “The Filler crashed last night...There is glass everywhere”. What led to the crash?



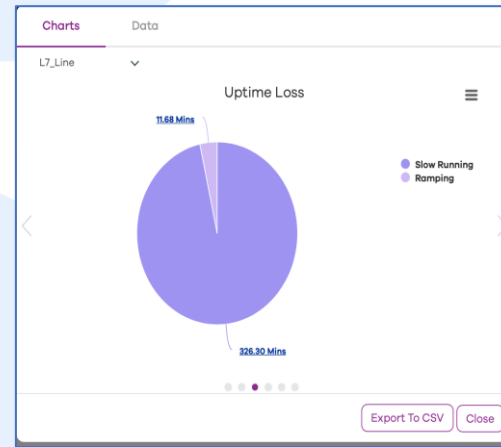
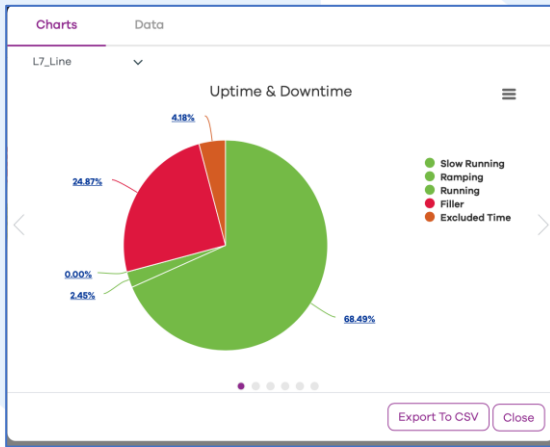
ABLE – Fault Learning to reduce engineering configuration time

Asset	FaultMsgId	FaultMessage	Total		Percent	
			Count	Mins	Count	Mins
Operation1	1234	Area-clear monitoring device has tripped	54	95.3	39%	22%
Operation1	1225	Machine stop tripped	23	74.1	17%	17%
Operation1	1345	Product incorrectly positioned	14	43.1	10%	10%
Operation1	2543	Container discharge table not clear	12	147.3	9%	34%
Operation1	1543	Stop switch activated	4	14.4	3%	3%
Operation1	444	24V circuit breaker has been tripped	3	1.2	2%	0%
Operation1	1522	Movement monitoring malfunction	1	4.4	1%	1%
Operation1	1977	Malfunction P.E. sensors upper unit	1	1.3	1%	0%

Recap: Features

- When Fault Learning is enabled, faults are learned as machine centers generate them
- Learned faults are then ranked according to count frequency and accumulated downtime
- Learned faults are dynamically added to the system for an active measure of capturing new faults

ABLE for Speed Loss Signal Processing and Data Transformation



✓	10/08/2021 11:07:26 AM	00:00:24	Failed 2000	Filler
✓	10/08/2021 11:06:41 AM	00:00:44	Failed 2005	Filler Micro Stop
✓	10/08/2021 11:05:35 AM	00:01:05	Running 4	Slow Running Operator Set
✓	10/08/2021 11:05:10 AM	00:00:24	Failed 2005	Filler Micro Stop
✓	10/08/2021 11:02:17 AM	00:02:53	Running 4	Slow Running Operator Set
✓	10/08/2021 11:01:38 AM	00:00:38	Failed 2005	Filler Micro Stop
✓	10/08/2021 10:55:24 AM	00:06:14	Running 4	Slow Running Operator Set

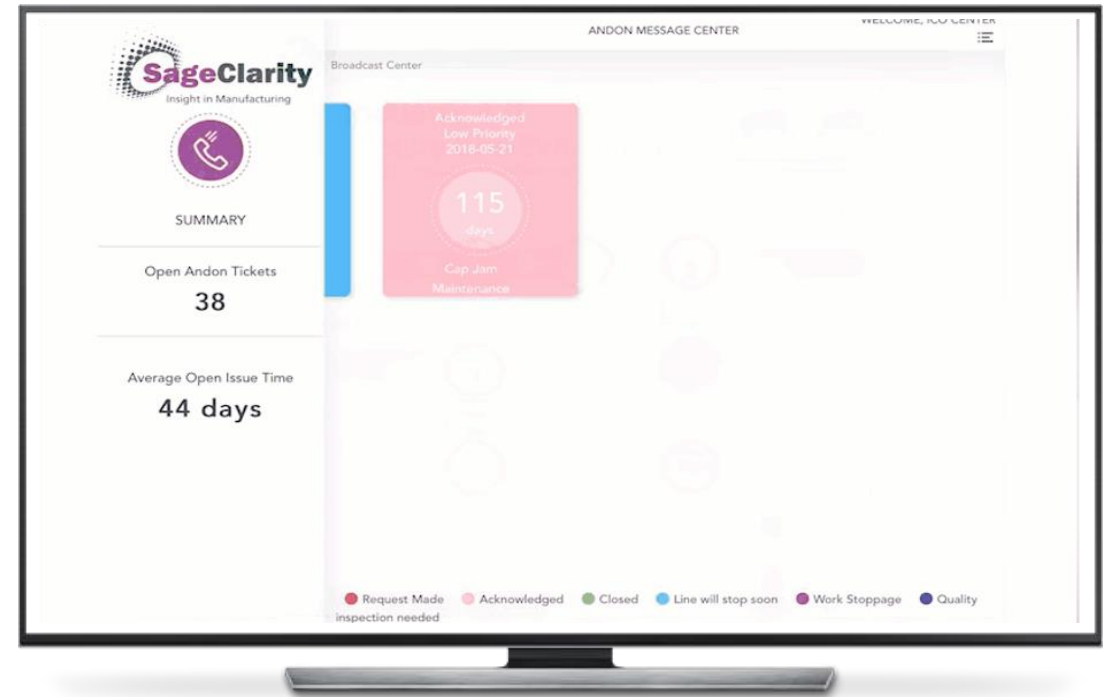
Recap: Key Features

- ABLE has the capability of tracking speed loss scenarios and providing a heatmap of machine production rates by work center
- In ABLE, FactoryView, the Uptime/Downtime Analytic is modified to display Uptime losses in green segments – A new Uptime Loss analytic breaks down the loss categories
- The event records are also tagged appropriately with the Uptime Loss categories

PEER™ Issue Management Accelerator



- Capture issues and set priorities
- Trigger alerts for responsive action
- Create follow up with accountability and workflow to insure resolution
- Connect issues with systems
- Build a knowledge base of corrective actions



A powerful API library for a variety of systems

- ERP systems
- MES systems
- Maintenance & Quality systems
- Panel views, HMIs, etc.

The Peer Message Center: Open close/update tickets

Features:

Tickets can be created and updated on:

- ✓ desktop PCs,
- ✓ Tablets,
- ✓ Smart phones

Large buttons, and Sage Clarity's "quick Click" functionality make it easy to initiate PEER Tickets with gloves.



Status Options

Acknowledged

Closed

Line will stop soon

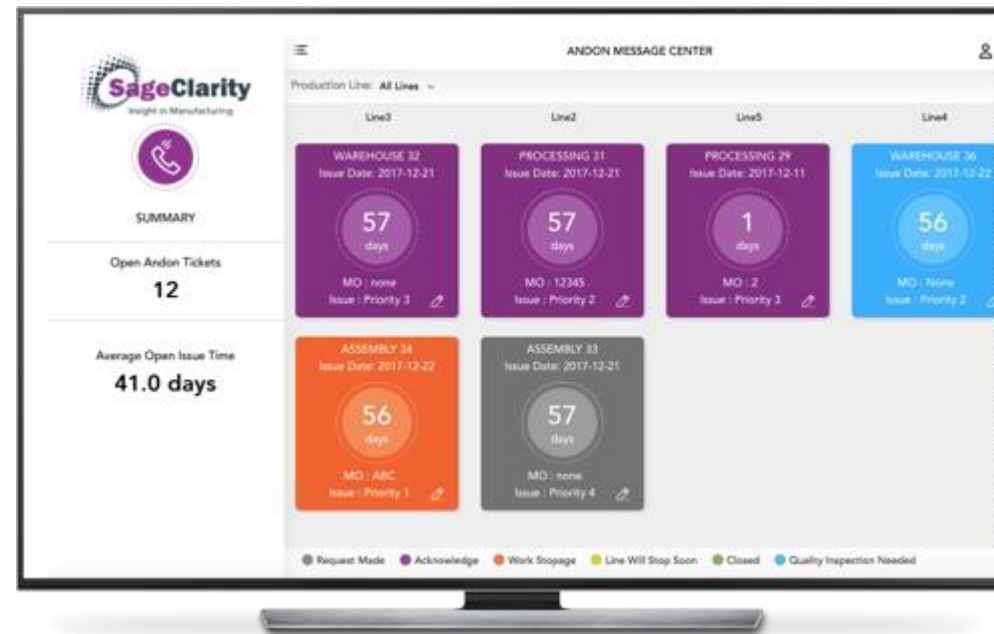
Work Stoppage

CANCEL

The Peer Broadcast Center: the Visual Factory for Control Rooms

Features:

1. Distribute status on overhead TVs
2. Provide real-time responsiveness to issues
3. Configured to display for a single line, multiples or an area.



PEER Andon Reporting Center – native reporting for issue management

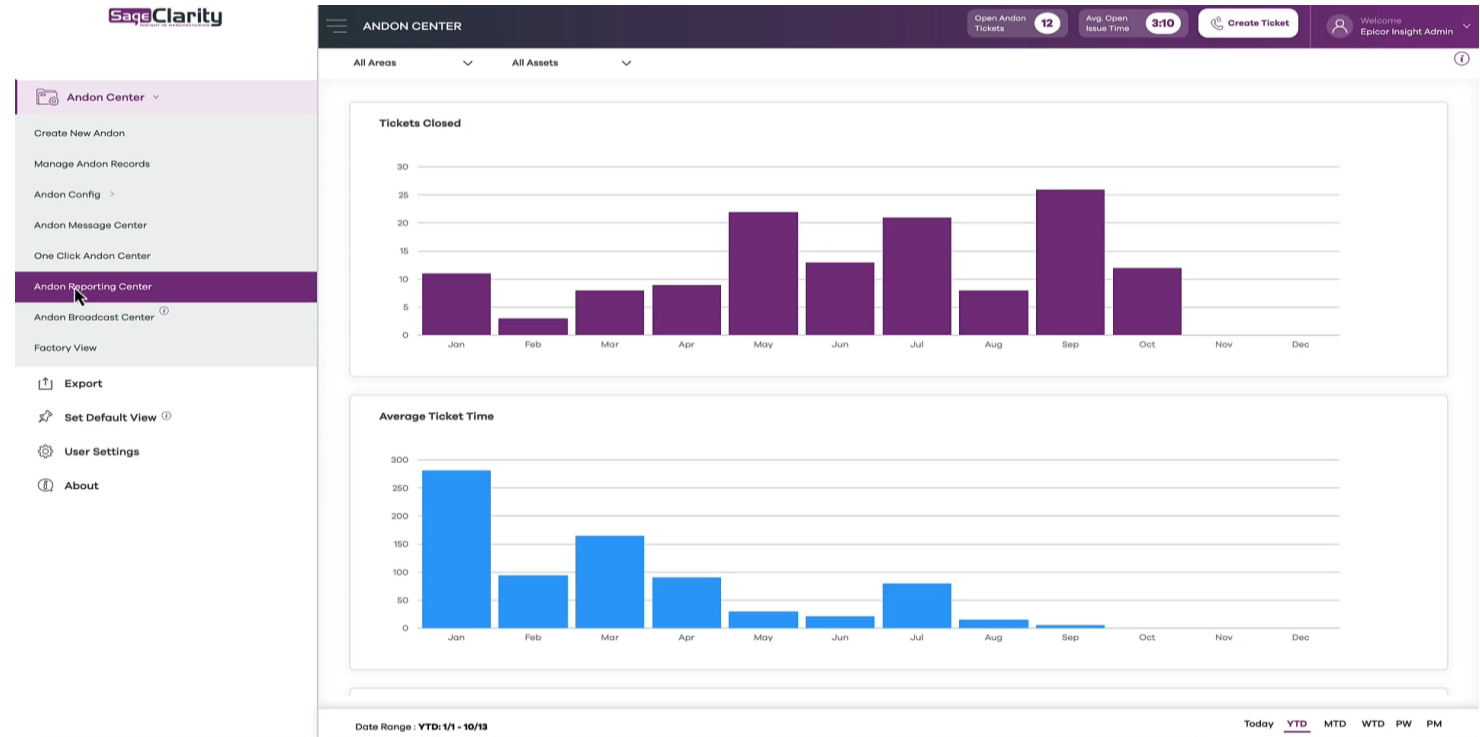
1. 'Out of the Box' analytics:

- PEER Andon tickets by line
- PEER Andon tickets by status
- Takt time analysis
- Production Trends

2. Fixed Date Range Selections (YTD, MTD, WTD, TODAY, Prev. Week, Prev. Month)

3. Reporting center is web-based, and can be used on desktop / laptops, tablets, & smartphones.

4. Data can be exported to Excel



Seamless WIN911 / PEER Integration



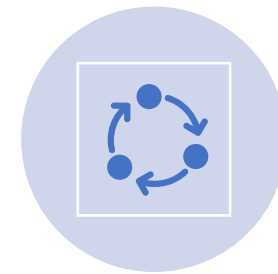
WIN911 INITIATES ALARM
NOTIFICATIONS



WIN911 THEN PASSES THE
ALARM INFORMATION TO PEER
AND ESCALATES IF NEEDED



PEER THEN FOLLOWS UP WITH
ISSUE RESOLUTION FROM THE
NOTIFICATION.



THIS CREATES A CLOSED LOOP
PROCESS FOR ALARMS AND
ACTIONS TAKEN

WIN-911 Triggers a Call for Help to PEER

The screenshot displays the 'WIN-911 Workspace' application. On the left is a sidebar menu with categories: Contacts, Directory, Roles, Formats, Schedules, Notification Policies, Alarm Sources, OPC Data Access, Labels, Reporting, Gateways, System, Info, Standby Activate, Status, and Send Feedback. The main area is titled 'Source: Kepware' with an 'Add Source' button. Below this are tabs for 'Source Details' and 'Items and Alarms'. A descriptive text states: 'An Item is an individual data object with properties that can include values, descriptions, alarm conditions, and acknowledgement states.' A search bar is present with a dropdown menu showing 'Item Id, Name, Type, Descriptions, Labels' and a 'Search Details' checkbox. Action buttons include '+ Add Item', 'Delete Items', 'Export', and 'Import Items'. A table lists items with columns for checkboxes, 'Item Name', 'Item Id', 'Alarm Type', 'Bit Pick', and 'Notification Policy'. One item is visible: 'Intake Pump' with 'Channel1.Device1.Tag2' as the Item Id, 'Boolean' as the Alarm Type, 'No Bit Pick' as the Bit Pick, and 'Callout List' as the Notification Policy. At the bottom right of the table area, it says '1 Items'. At the very bottom of the application window are buttons for 'Delete Source', 'Test Connection', 'Save Changes', and 'Cancel Changes'. The Windows taskbar at the bottom shows the search bar and several application icons.

	Item Name	Item Id	Alarm Type	Bit Pick	Notification Policy
<input type="checkbox"/>	Intake Pump	Channel1.Device1.Tag2	Boolean	No Bit Pick	Callout List

Smart Alerts: Automatic escalation of notifications

Customize notification settings based on the parameters that you need to track

- Notification group(s) are alerted on initial call for help and andon status changes
- Visual alert seen on monitors and email / text notifications sent out to key people
- Further escalation can be automatically triggered on alert type and parameters

New Andon Request: Line1 needs help.

 Clarity Team
To jon.simpson@sageclarity.com

A new Andon help request is generated. The details are below:

Issue Date : 07/23/2019 11:57:09 AM CDT
Line/Machine : Line1
Andon Status : Request Made
Issue : Robot Stacker: Case Dropped
Andon Type : Maintenance
Priority :
SKUs Affected :
Issue Details :
Description :
Downtime SuperReason :

To view or update the record , log in to the Andon app.
<https://host-sageclarity.com/AndonCenter/mobile/>
Clarity Team

Alert Type	Parameter	Notification Group
Initial andon incident	When ticket is created	Maintenance, Quality, Supervisor, etc.
Andon reminder	Alert after 15 minutes without acknowledgement	Maintenance, Supervisor, Quality, etc.
Andon escalation	Alert after 1 hour still open	Supervisor, Manager, etc.
Incident updates	Alert on state change	Supervisor, Manager, etc.
Resolution escalation	2 days without resolution	Plant Manager

Creating a Teams Channel for Notifications

The screenshot displays a Microsoft Teams channel named "Andon Notifications Test Team". The channel has tabs for "General", "Posts", "Files", "Notes", and a "+" icon. The "General" tab is active, showing a "Start a new post" section with "Post" and "Announcement" buttons. Below this is a notification email from "ClarityTeam@sageclarity.com" dated 10:51 AM, with the subject "Andon Entry Status Changed." The email body states: "State for andon entry is changed to Acknowledged. Issue Date : 05/14/2024 10:51:03 AM CDT. AREA : BCGArea 01. Line/Machine : Line1. Andon Status : Acknowledged. Andon Initiator : ICO Center. see more". There are buttons for "View original email" and "Reply". A "Last read" indicator is present. Below the email is another notification email from the same sender dated 10:47 AM, with the subject "New Andon Request: Line1 needs help." The body states: "A new Andon help request is generated.The details are below: Issue Date : 05/14/2024 10:47:14 AM CDT. AREA : BCGArea 01. Line/Machine : Line1". To the right, a "Members" tab is open, showing a list of members. The list includes "Jessica Morrison" as the Owner and three other members: "Jessica Morrison", "Ryan Wayne", and "john.oskin@sageclarity.com".

Andon Notifications Test Team Members Pending requests Channels Settings Analytics Apps Tags

+ Add member Search

Owners (1)

Name	Title	Location	Tags	Role
JM Jessica Morrison				Owner

Members and guests (3)

Name	Title	Location	Tags	Role
JM Jessica Morrison				Member
RW Ryan Wayne				Member
J john.oskin@sageclarity.com				Member

One View™ Analytics Accelerator for Production Intelligence



- Key Capabilities

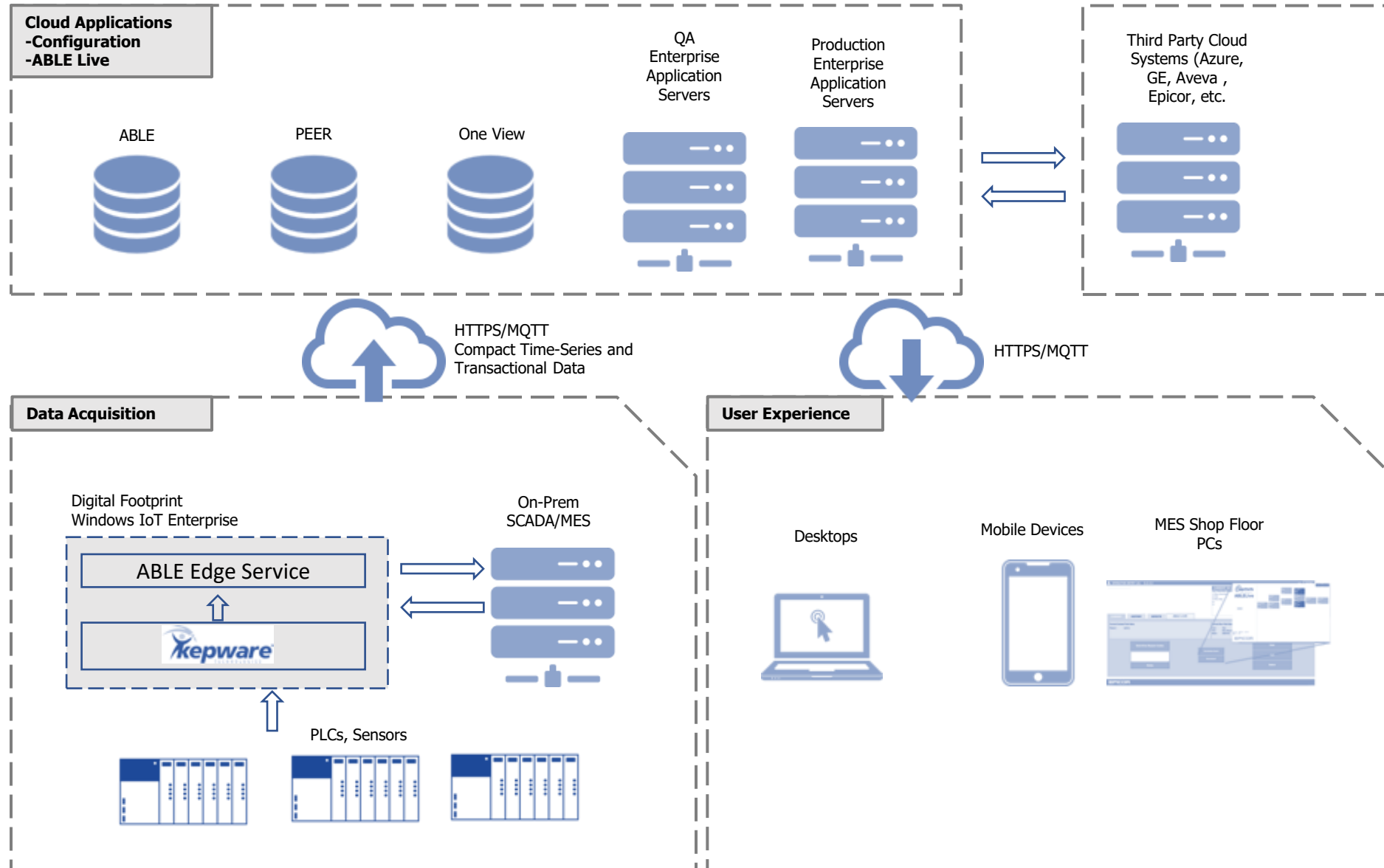
- Enterprise roll up across sites
- Drill down by plant / line
- YTD, MTD, WTD reporting
- “Mobile First” design
- Metric apps for OEE, OTIF, Quality, etc.



- Fills the mobile strategy for manufacturing companies
- Can be configured as a Single app or as multiple apps
- Can be used to bring real-time visibility to key manufacturing metric

Contemporary IOT Cloud Architecture

Can be Delivered in the Cloud or On-premise



Appendix – Market Positioning



Where to Position ABLE...

- In sales proposals for MES and OEE projects
 - Competitive advantage with advanced data collection
 - No PLC programming to reduce cost
 - Faster data validation
- In completed MES and OEE projects
 - Enhance with Next Gen advanced data collection at the unit op level
- In new opportunities that may not be ready for MES
 - Quick start data collection for immediate value
 - Primer for MES justifications leveraging data collected coupled with some of our benchmark stats
- In active MES/OEE service engagements
 - Advanced data collection without PLC programming
 - No need for a data concentrator
 - Remote Data validation tools
- **The Impact: 5-10% OEE uplift, 70% reduction in engineering time, 5X improvement in data fidelity**

Where to Position PEER...

- Any win911 accounts as an upgrade and need for Issue Management
- Accounts where “call for help” functionality can be beneficial
 - Machine based “calls for help”
 - Operator based “calls for help”
- Closed loop integration with CMMS systems
 - Think beyond maintenance work orders...Safety, quality, material issues, etc.
 - Capture the “holistic” event, from cradle to grave
- **The Impact: Significant improvement in Response and Resolutions times**

Large Enterprise/Multi-Site Strategy

- Large Enterprise customers typically looking at broader initiatives where performance is a key pillar. More competitive.
- Key Selling Points
 - Compress multi-year deployments to a single year or less
 - Reduce engineering cost by 70%, overall cost by 30-40%
 - Reduce infrastructure using digital devices vs. site servers
 - Better consistency, data fidelity, and support
 - Value-added features; data validation UI, Digital Twin, Machine Learning







SME/Plant Level Strategy

- SME's typically want turnkey solution with clear alignment to productivity improvement goals. Tangibility is critical.
- Primary Verticals are Food, Beverage, CPG/FMCG
 - Any customer with connected lines is the “sweet spot”
 - By no means limited, anyone with equipment is potential
- Key Selling points
 - Easy to get started
 - Cloud deployment for active release management
 - Reduce the dependence on IS team for support
 - Empower MES customers with seamless and successful delivery

Accelerator Apps Overview

Product	Standard Pricing	Overview
ABLE	<ul style="list-style-type: none">Subscription based\$500 per asset per year	<ul style="list-style-type: none">ABLE™ edge computing analyzes data from the production line and delivers root-cause analysis when issues arise, and can even predict upcoming production issuesABLE integrates IoT edge data into business systems—MES, SCADA, and ERPsProduction line modeling finds the root cause of downtime, streamlining the process to get the line running againRapid implementation timeline – 5 days or less in the U.S.
PEER	<ul style="list-style-type: none">Subscription basedBase Andon - \$10,000 per year / siteAndon IOT - \$150 per year per IOT connection	<ul style="list-style-type: none">Role-based alarms notify the right person at the right time based on alarm type and locationIntegrate with existing Andon lights systemIntegrate with MES or ERP systemsDigital alerts on operator HMIs and factory floor displaysBuilt-in reporting to track alerts over time and response timeIntegrate machine related and non machine related issues
One View	<ul style="list-style-type: none">Subscription based\$5,000 per year per site	<ul style="list-style-type: none">One View's sophisticated shallow-dive analytics offers organizations immediate access to relevant KPIsDesigned to be complimentary to BI systems providing monthly reporting, One View delivers real time and quickly understood metrics for the present momentThrough multiple metrics-based apps, team members can review and collaborate around KPIs and perform their own cause/effect analysis

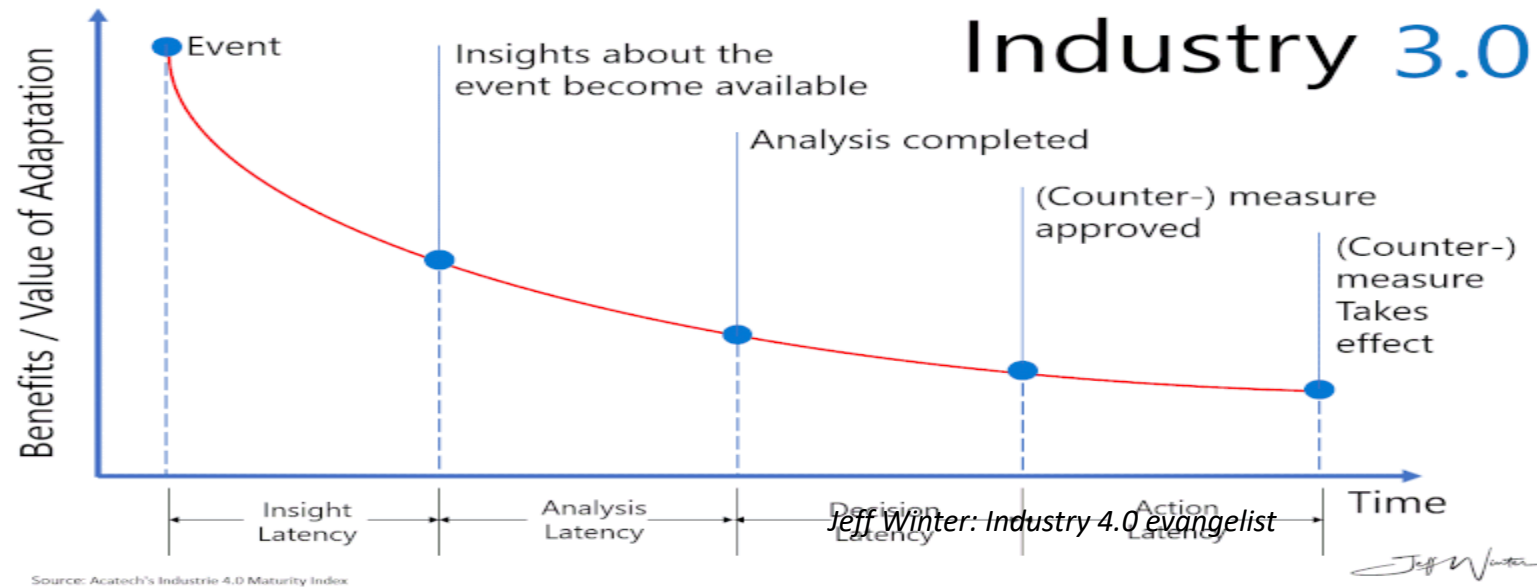
Customer Scope and Impact

	Situation	Scope	Impact
	<ul style="list-style-type: none"> Seeking advanced data collection to provide a digital platform for the company's "Digital Factory" initiative while eliminating the need for PLC programming 	<ul style="list-style-type: none"> Broad Adoption of Sage Clarity's ABLE technology 20+ plants, 200+ production lines 	<ul style="list-style-type: none"> 12 plant rollout achieved in < 12 months \$40 million savings glide path
	<ul style="list-style-type: none"> Looking for rapid deployment on a new bottling hall with a turnkey solution 	<ul style="list-style-type: none"> Implemented in less than 3 weeks. Drove adoption of additional MES modules from our partner vendor on the project 	<ul style="list-style-type: none"> Successful deployment with 7X data collection from original design Identified previously unidentified line imbalances
	<ul style="list-style-type: none"> Seeking rapid deployment platform for advanced machine data capture as part of broad MES deployment 	<ul style="list-style-type: none"> Implemented as part of MES Connectivity project 	<ul style="list-style-type: none"> Critical Industry demand met on new product launch, in record time, rollout in process
	<ul style="list-style-type: none"> Looking for intelligent root cause analysis for lines that have plateaued in performance 	<ul style="list-style-type: none"> Implemented in (4) plants in North America 	<ul style="list-style-type: none"> 20% improvement in data fidelity 50% reduction in integration costs
	<ul style="list-style-type: none"> Seeking data integration of SAP with plant MES system along with new data capture requirements in their process area 	<ul style="list-style-type: none"> Installed on 60 batch tanks Included SAP integration of key batch tank data 	<ul style="list-style-type: none"> Cutting edge analytics developed for batch processing
	<ul style="list-style-type: none"> Required quick deployment of advanced data collection unavailable in SAP solution 	<ul style="list-style-type: none"> Installed in largest dairy plant in North America Deployed in less than 6 weeks plant wide Intelligent root cause analysis adopted 	<ul style="list-style-type: none"> 20% improvement in changeover time 10% lift in OEE

Appendix - Value to Partners,
Distributors, SIs & Customers



Time compression matters...Accelerator apps can provide faster adoption for Digital Transformation Initiatives

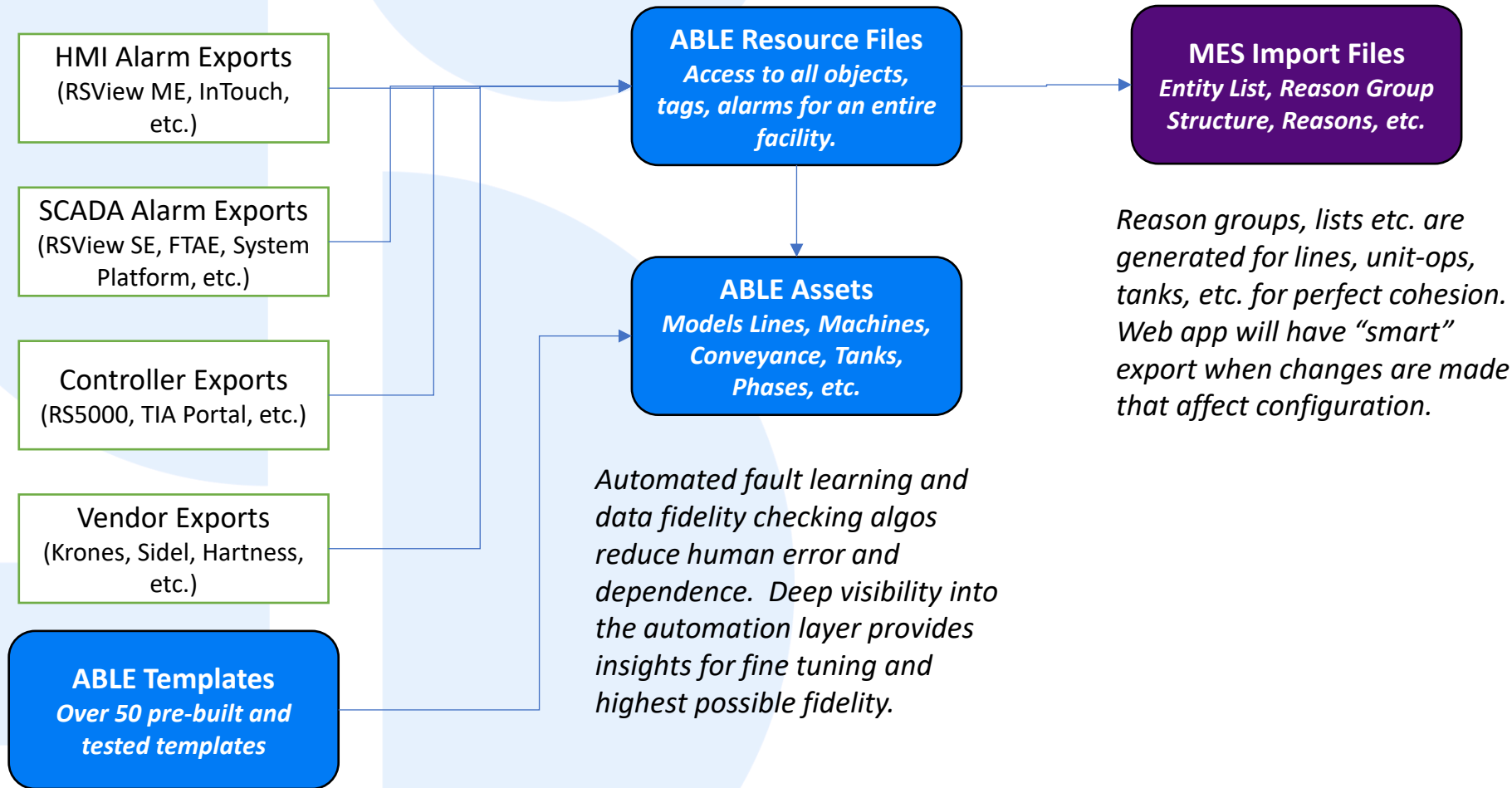


- ✓ 76% of manufacturing executives in Deloitte's post election poll intend to increase investments into digital initiatives and Industry 4.0 technologies
- ✓ Industrial leaders are competing to be at the forefront of Industry 4.0
- ✓ This creates immediate opportunity to embed in customer architectures to lock in long-term recurring revenue
- ✓ Ability to offer a full suite Industry 4.0 solution is best way to capture this opportunity – Sage Clarity is a key piece

Our Key Accelerators

- Templates
 - Pre-engineered models for over 60 machine types and growing
 - Pre-engineered loss structure, categories, util states to meet different MES/ERP enterprise models and integration requirements.
- Automated Imports
 - Imports from HMI's and Controllers provide comprehensive landscape of automation footprint including every identifiable fault in the site.
- Fault Learning
 - Monitors thousands of potential faults per operation, often over 100,000 in a given site.
 - Recurring faults are identified and quickly mapped to new downtime reasons.

Consistent and Highly Automated Process



SmartSights Accelerators for Digital Transformation Initiatives



70% REDUCTION IN
ENGINEERING TIME



5X IMPROVEMENT IN
DATA FIDELITY



SPEED TO VALUE 4 – 6
WEEK REDUCTION
(PER SITE)



ENHANCED
FUNCTIONALITY



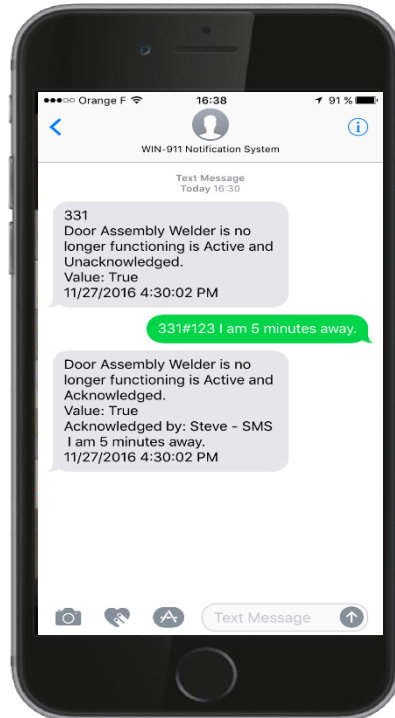
EXPANDING THE
DIGITAL FOOTPRINT

WIN-911 and XLReporter Update

Extend Alarms with Notifications



Notification Methods

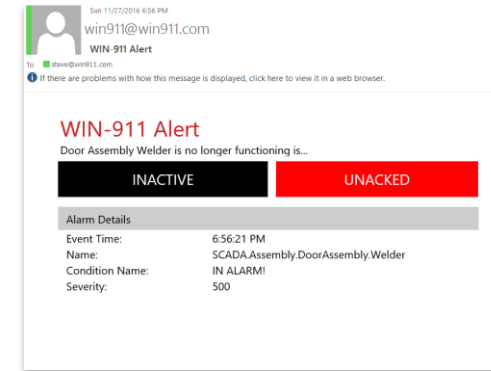


VoIP & Analog

Phones



SIP.US

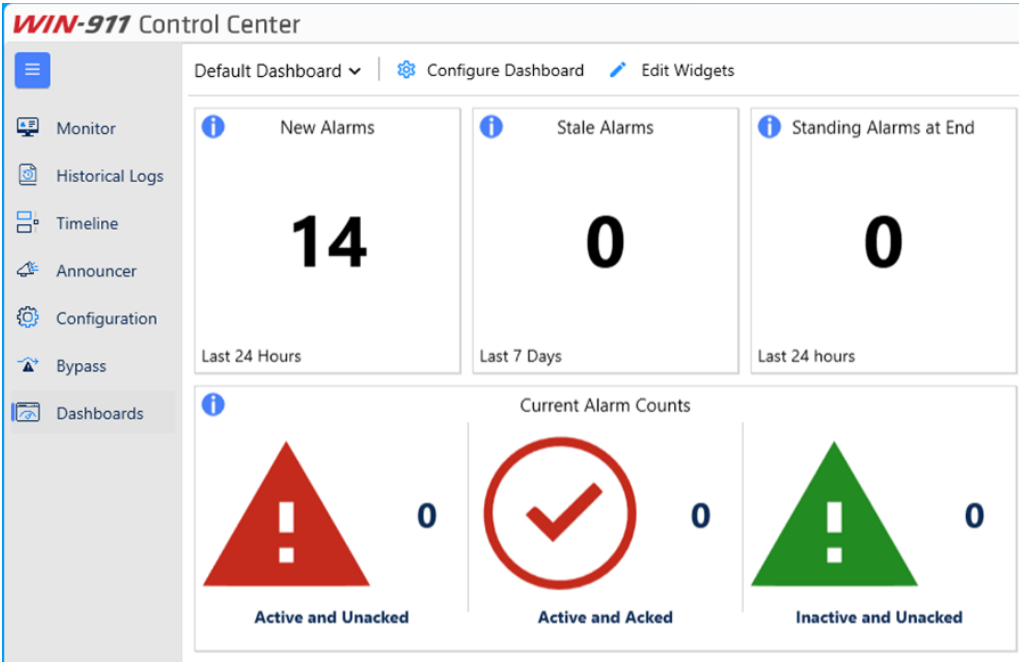


WIN-911 Mobile

- Android and iOS Device support
- Alarming via Push Notification
- Dynamic alarm and report summary screens – live and historical
- Change Schedules and Notification Policies from anywhere!
- Supports Multiple Sites
- SmartSights Mobile: Coming soon!

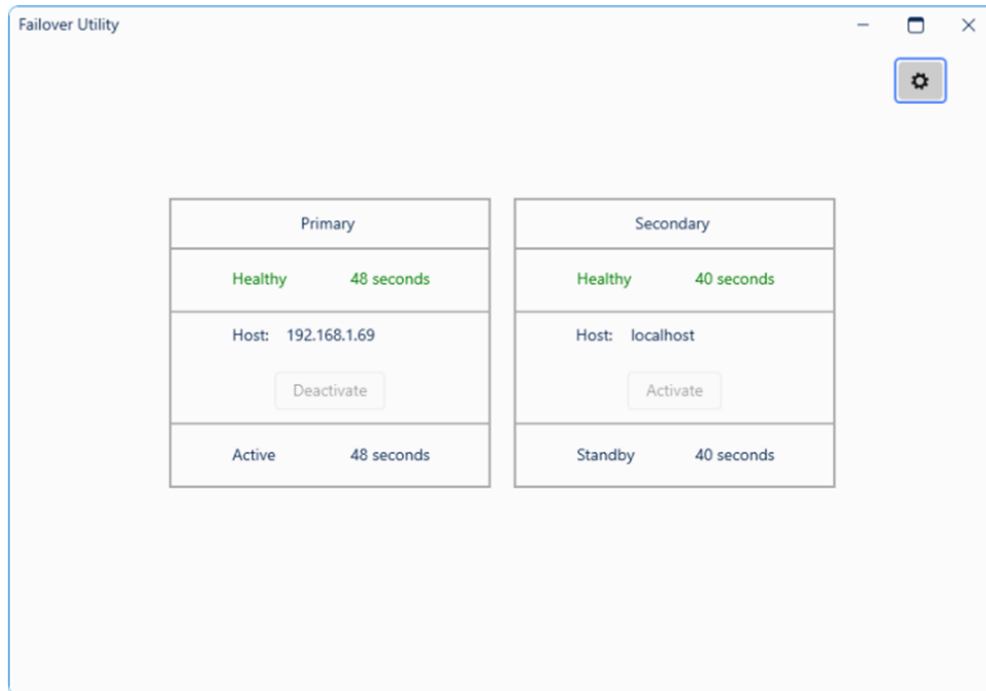


Alarm Dashboards



- Provides a snapshot of alarm performance
 - ISA 18.2 “Lite”
- Many alarm metric widgets are available
- Multiple Dashboards are supported
 - Can connect to multiple systems
- Requires Ultimate license subscription

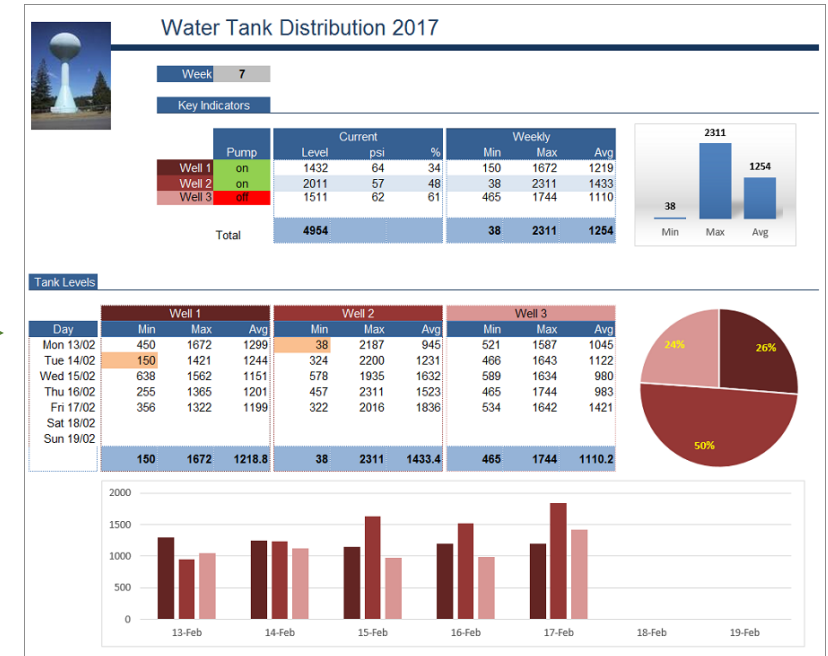
Failover Utility



- Monitors Primary and Secondary WIN-911 systems
- Automatically switches the active WIN-911 system when a fault condition is detected
 - No scripts required
- Automatically reverts to Primary when it recovers
- Included when you purchase a Failover license subscription

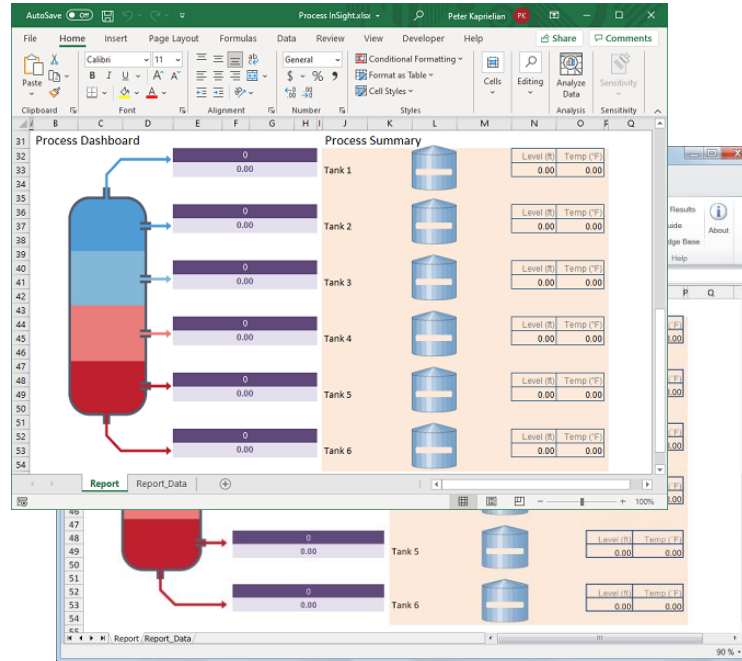
Solutions for All Automation Systems

- For OEMs and Small Facilities
 - Report directly from PLC
 - Use OPC DA, UA
- For HMI Systems
 - Report from Data Logs and Text files
- For Historians
 - OPC HDA
 - Connect to leading Historians
- For Database Users
 - Report ISA 18.2 metrics
 - Report from WIN-911 database

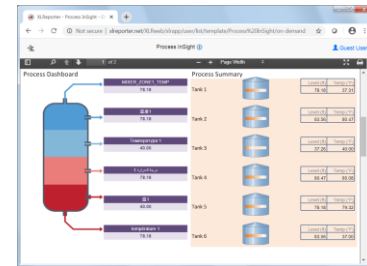


Turn Data into *Insight*

- Connect To Over 80 Data Sources
 - Native connectivity to iFIX, CIMPLICITY, and GE Historian
 - Scales to PLC, HMI, Historian, Databases
 - OPC and OLE-DB
- Design Workbook Templates
 - Out-of-box reports
 - Design Studio Standalone or in Excel
 - Powerful, Flexible Analytics
- Report Automatically or On-Demand
 - On Time or Events
 - Web Browser or Windows Desktop
- Distribute
 - Workbook, PDF, and Web Reports
 - Email, FTP, Database Export, REST API
 - Smart Devices



Workbook template



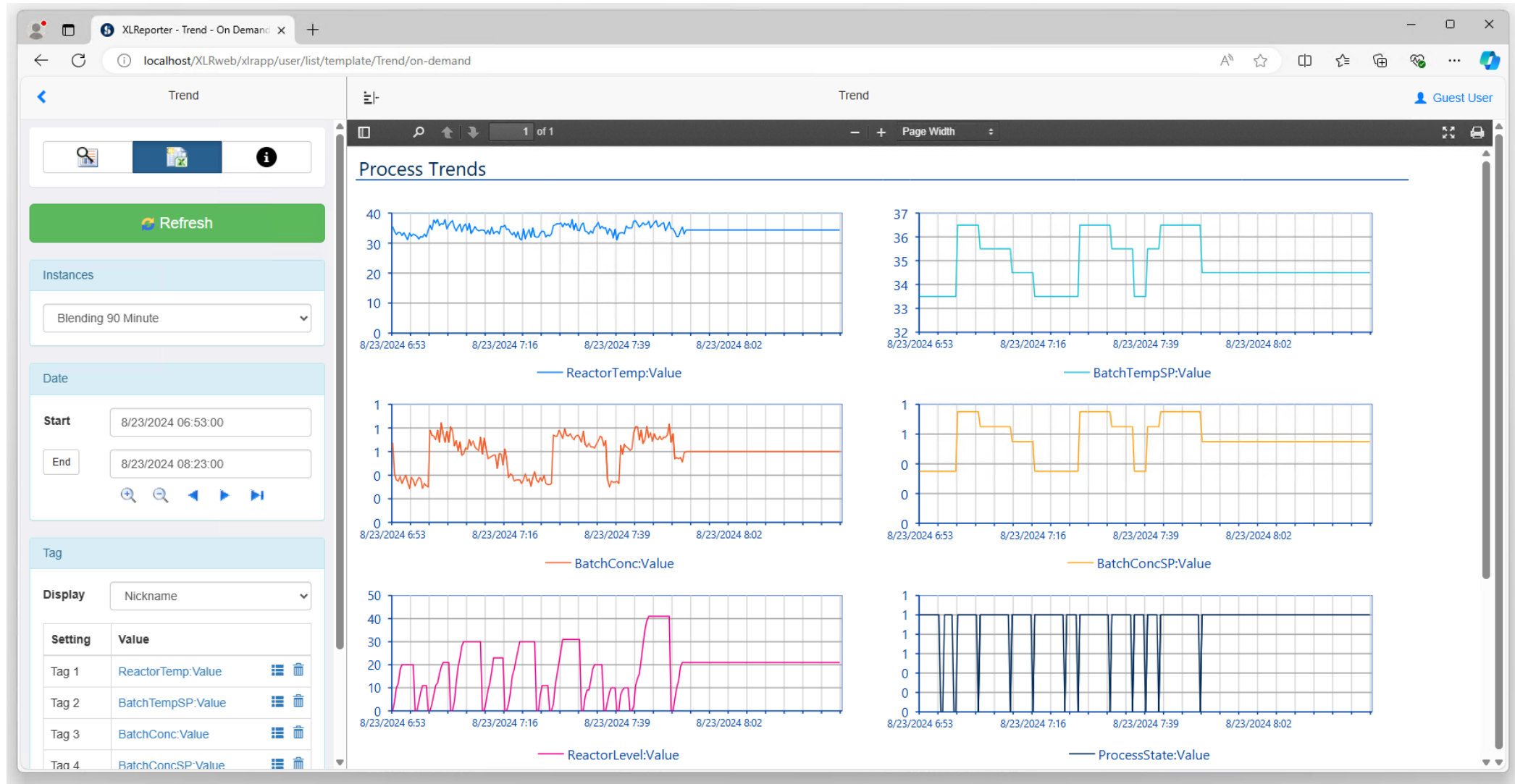
Desktop Reports



Mobile Reports

Automatically
On-Demand

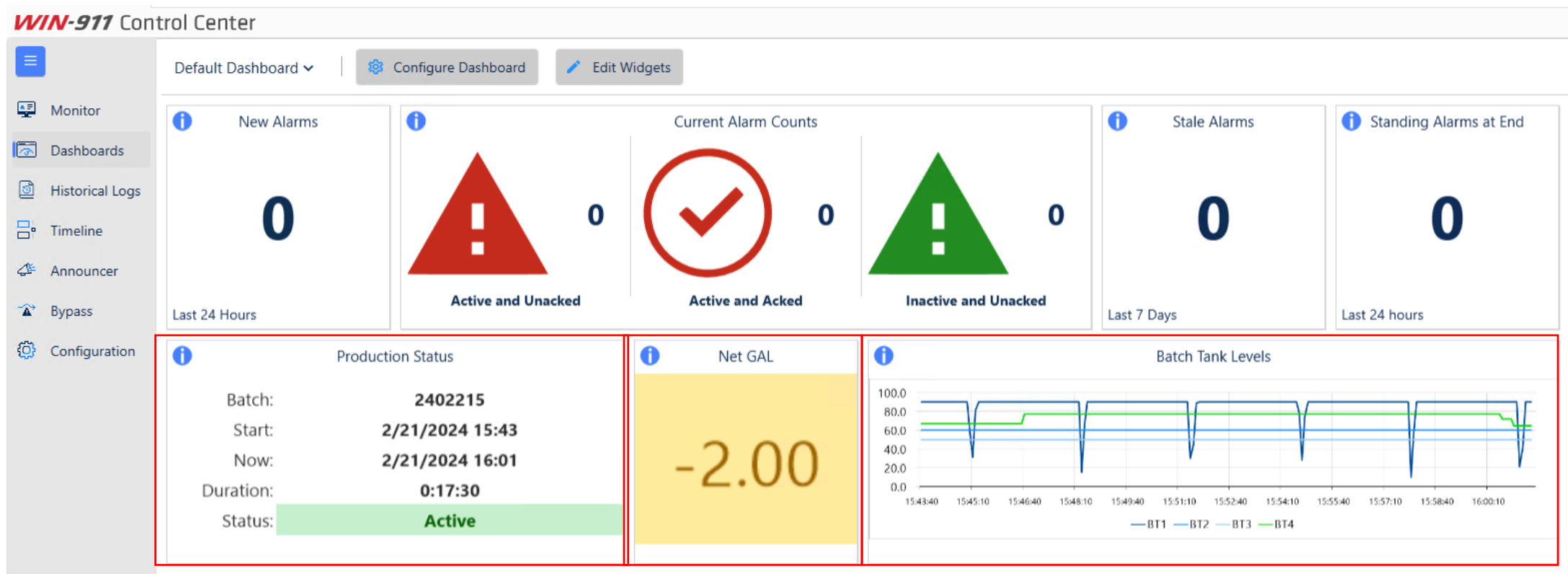
On-Prem Web Reports or Local Reports



New SmartBundles!

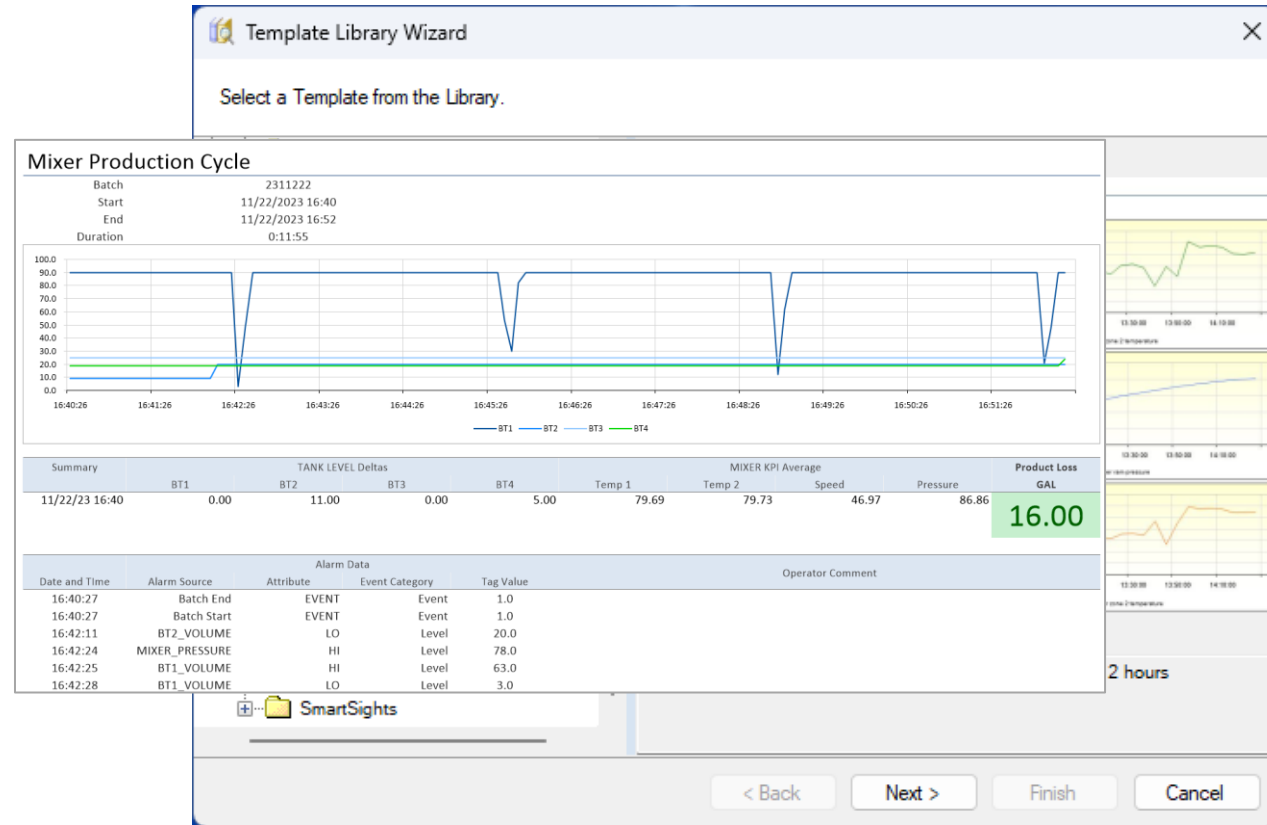
- Now offering bundled XLReporter and WIN-911 solution – available as 3-year subscription
- Available in SmartBundle Pro and Ultimate packages
- Includes integrated Reporting options; Automated Push Reports requires Ultimate edition
- Added PEER integration: coming soon!

Bring the Big Picture into Focus



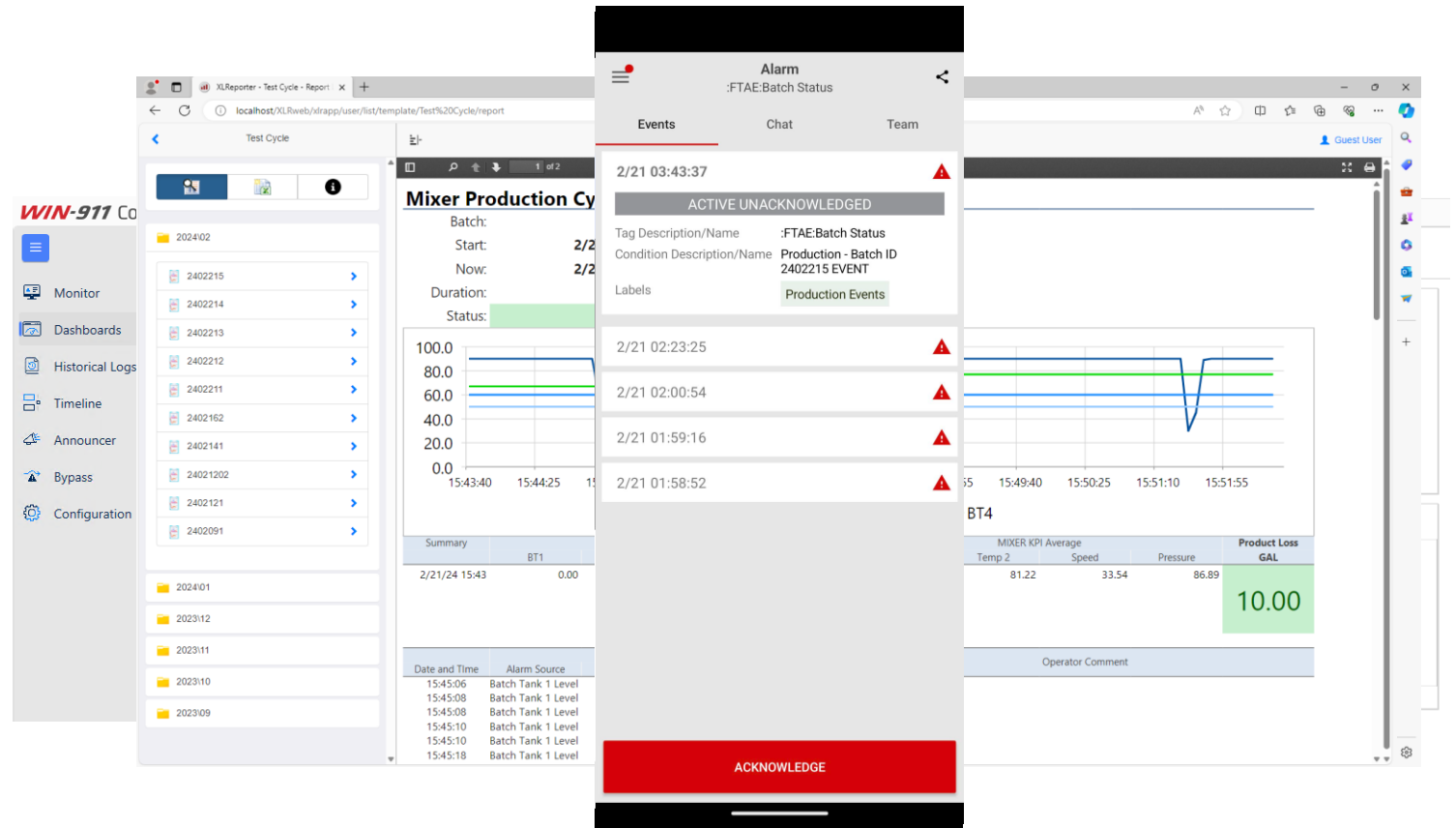
Relate Alarms to Process Data

- Out-of-Box Templates
- Configurable Templates
 - Incident Reports
 - Enhance alarm response
 - Dashboards
 - Summarize process activity
 - Event Reports
 - Monitor and audit discrete processes



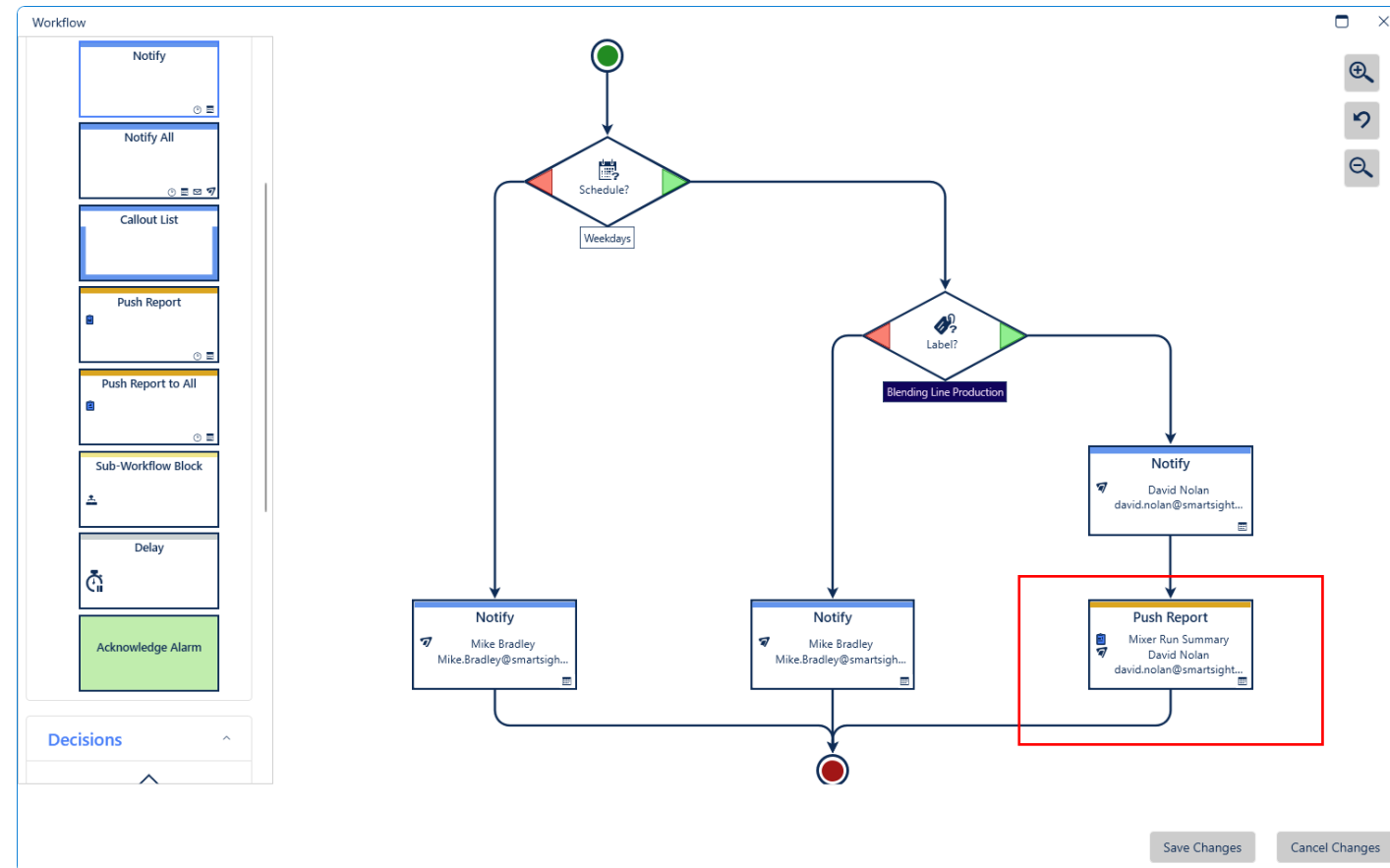
One Facility, Different Perspectives

- Mobile Alerts
 - Maintenance, operators
- Detail Audit Reports
 - Quality control, regulatory
 - Process engineers
- High-level Summary
 - System admins, supervisors
 - Live alarm metrics
 - Holistic process summary
 - Drill-down analysis

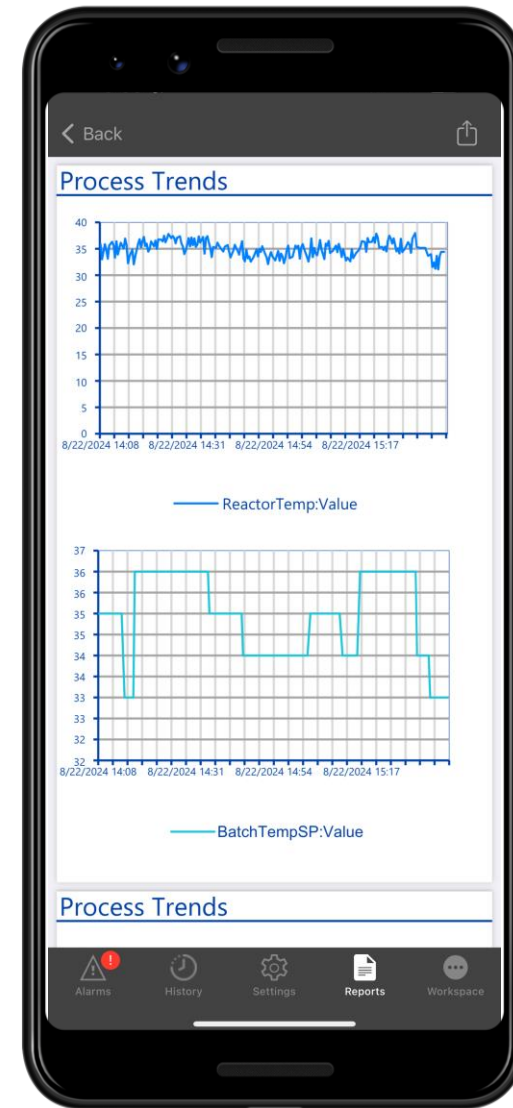
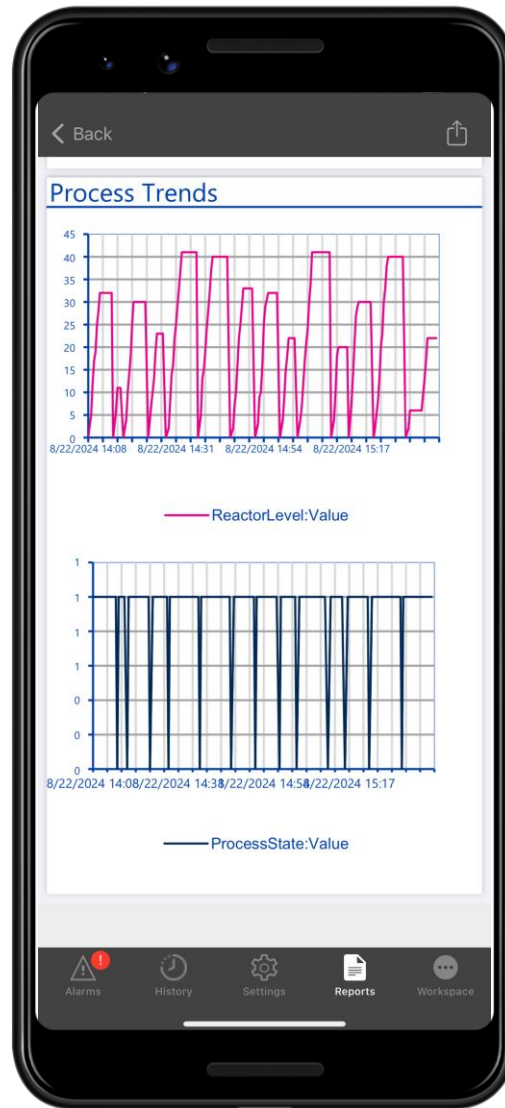
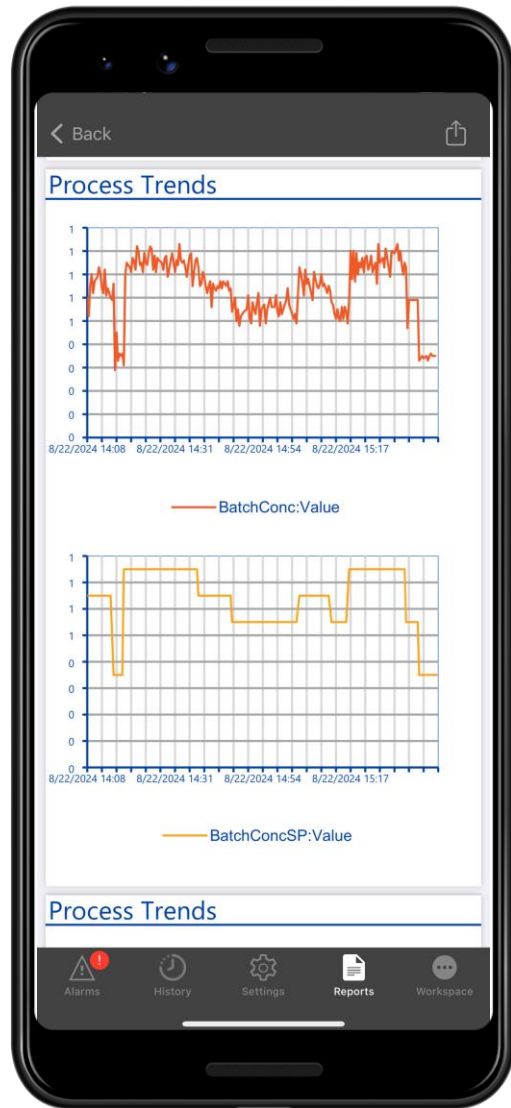


Add Context to Notifications

- Link Report to Workflow
 - WHEN to send a report
 - WHAT report to send
 - WHO to send it to
 - HOW to send it



Mobile Trends and Dashboards



Water Treatment Che... ▾

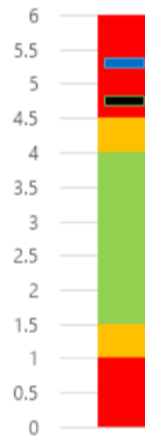
Configure Dashboard

Edit Widgets

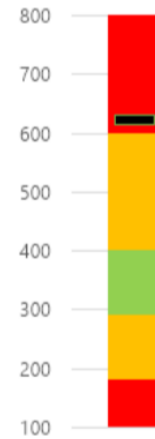
WIN-911 System(s)

XLRMINIDEMO01 ▾

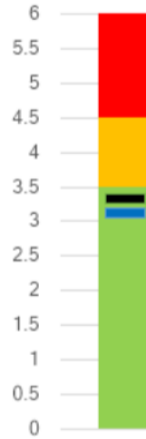
CL2 (mg/l)



Cond. (S/m)



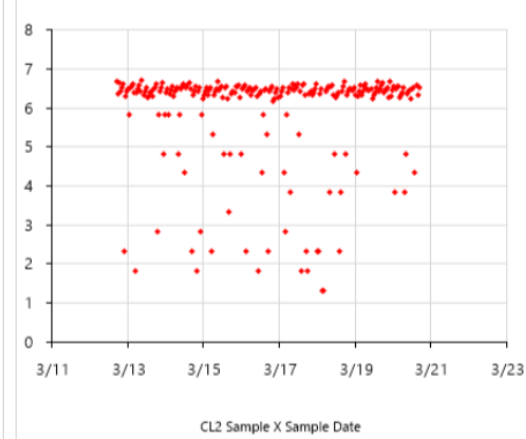
DOC (mg/l)



NH4 (mg/l)



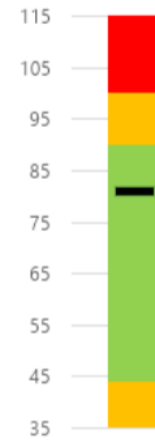
Chlorine Samples



NO3 (mg/l)



Temp. (degF)



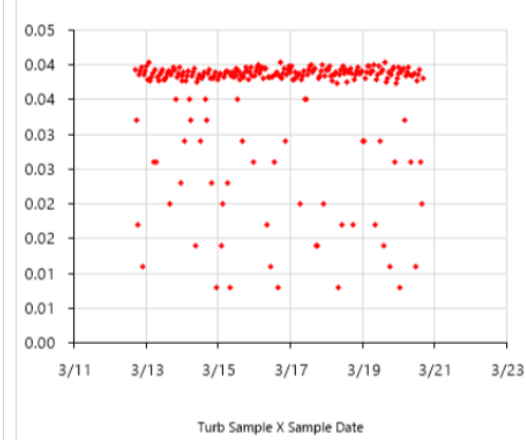
TOC (mg/l)



Turbidity (NTU)



Turbidity Samples



SmartSights Bundle – Product Synergy

- Software License
 - XLR now on WIN-911 platform (CodeMeter/WIBU)
 - Integrated Features with Subscription
- Perpetual Features
 - Produce reports on WIN-911 log data
- Subscription Features (Pro and Ultimate)
 - Push Reports and Dashboards directly to WIN-911 users (app + email)
 - Access On-Demand Dashboards from WIN-911 Mobile
 - PEER integration in March updates

A blue-tinted photograph showing the lower legs and feet of two people walking on a crosswalk. The person on the left is wearing light-colored jeans and dark sneakers, while the person on the right is wearing dark pants and dark sneakers. The crosswalk consists of white stripes on a dark surface. The text "Let's get started!" is overlaid in white, bold, sans-serif font across the middle of the image.

Let's get started!