



**THE EG ADVANTAGE!**

- 1. Ease of Use:** "Simple to use", graphical user interface suitable for a maintenance domain expert .
- 2. Lower Cost of Ownership:** Completely off the shelf solution, does not require any "custom code", and therefore, reduces the cost of ownership.
- 3. Technology:** First of a kind " opportunistic maintenance" software that allows for abstraction of relevant intelligence from a multi-dimensional, user-defined, contextual and temporal classification of raw plant information.
- 4. Ease of Deployment:** Can be up and running in a few hours!
- 5. Adaptability:** Adapts to your existing EAM and plant application systems.

**RESEARCH FINDING**

A recent study by a well known research firm shows that 87% of top manufacturing companies studied consider appropriate asset management as either "extremely" important or "very" important to their organization's success and yet only 7% say that they are completely satisfied with their maintenance performance !

Enterprise Gateway (EG) is a real time opportunistic maintenance software that integrates the plant to EAM. By discovering intelligence from raw plant data, EG proactively generates real time actions to prevent machine failures. Apart from improving availability, EG helps to uncover a plant's hidden capacity.

**PRODUCT INFORMATION SHEET**

**Business Value in a Nutshell**

Sub-optimally managed plant maintenance has a damaging ripple effect on an entire manufacturing firm - lost production, poor quality, spiraling inventory costs, broken delivery commitments, etc. Enterprise Gateway (EG), a high technology software product, eliminates these by delivering real time opportunistic maintenance that cuts unplanned downtimes, optimizes scheduled maintenance and tracks velocity of maintenance response apart from generally improving plant reliability, availability and return on assets.

**Delivering Real Time Opportunistic Maintenance**

EG is a software that integrates a manufacturing shop floor to an Enterprise Asset Management (EAM) system to deliver Real Time opportunistic Maintenance.

Real Time opportunistic Maintenance enables a manufacturing organization to fulfill two important goals: (a) continuous improvement in the Production Performance; and (b) continuous improvement in Reliability.

EG delivers Real Time opportunistic Maintenance in four steps:

- (i) real time monitoring of the performance of production assets ("*Asset Performance Monitoring*");
- (ii) real time discovery of emerging trends of asset performance from the raw data generated from plant operations ("*Maintenance Intelligence Discovery*");
- (iii) generation of appropriate real time actions (in a EAM or plant system) using a rules engine in order to proactively prevent machine failures ("*Proactive Action Generation*");
- (iv) collaborating with a EAM system in real time tracking of the said actions to closure and providing visibility of the current status in a corporate web portal ("*Maintenance Activity Tracking*").

Additionally, EG helps to optimize scheduled maintenance activity in order to reduce the Total Cost of Downtime. As a result of reducing unplanned downtimes and optimizing planned shutdowns, EG enables improvement in Plant Availability.

Over a period of time, EG also helps to uncover the plant's hidden capacity, thereby improving the plant's return on assets.

**PRODUCT FUNCTIONS**

EG comprises an Admin Module and a Business Module.

An Admin User can use the **Admin Module** for :

- ▶ configuring the real time interface between the plant and EAM applications;
- ▶ downloading plant and enterprise equipment models;
- ▶ reference mapping between plant and enterprise models.

A Business User can use the **Business Module** for:

- ▶ distinction of "maintenance contexts" from raw plant data;
- ▶ configuration of aggregation mechanisms for conversion of maintenance contextual data into metadata;
- ▶ configuration of rules for the discovery of maintenance related intelligence;
- ▶ configuration of real time actions ;
- ▶ tracking of the current maintenance status via real time visu-alization of the EAM data from a corporate portal.

**SUCCESS SNIPPETS**

A sudden increase in bearing temperature triggered a work order which resulted in the early identification of a coolant leak. Instant saving of \$60K & no downtime!

Another company downsized their non-critical inventory and increased the availability of critical parts to maximize uptime!

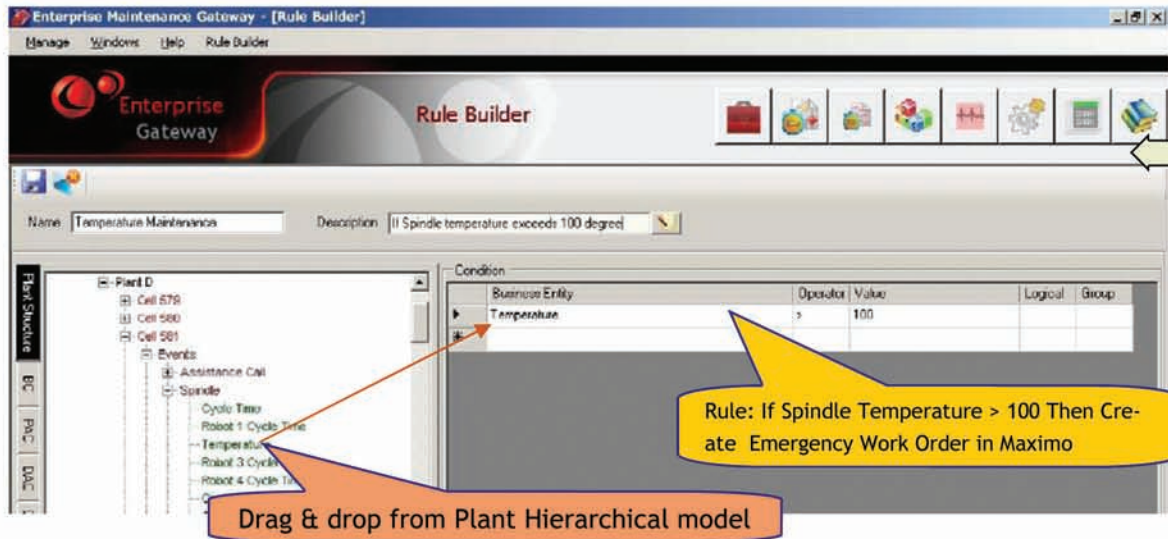
A traditional two week calendar based PM every six months of 5300 hours annually was replaced by a 3 day shut down occurring six times (3500 hours) !

**CONTACT INFORMATION:**

5G Automatika Ltd.  
 North America +1-416-925-1440  
 Europe +44-191 3055174  
 Asia Pacific/Middle East:  
 +91-44-22502773/74/75  
 Email: info@5gautomatika.com

## EG RULE BUILDER

Build rules in EG that correspond to actionable maintenance business scenarios!

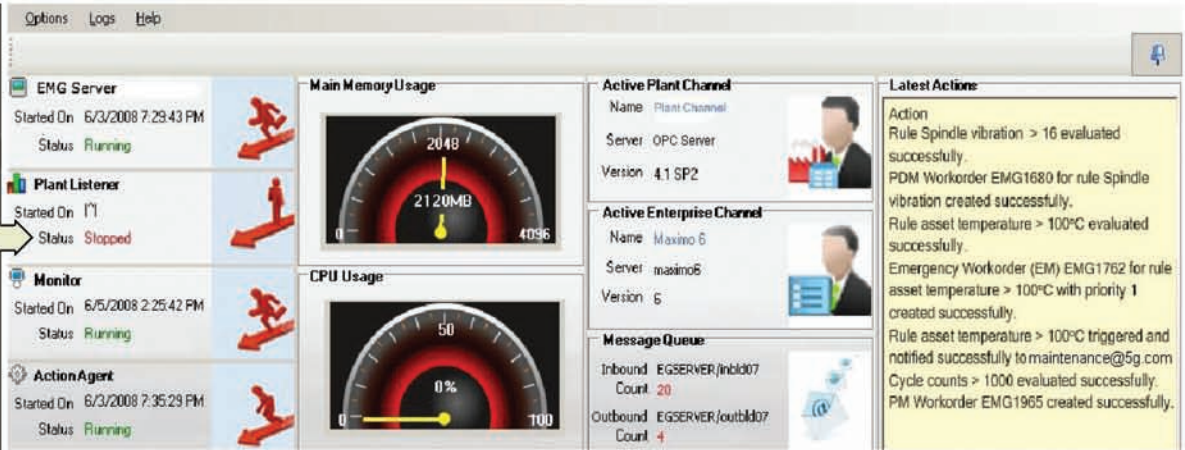


Rule Builder allows a business user to create rules using a simple drag and drop feature. Rules can either trigger on a simplistic, single variable threshold crossing like the one shown or may be built for an emerging, complex maintenance scenario.

## EG DASHBOARD

Monitor the real time maintenance intelligence activity from a dashboard!

EG Control Panel is a real time control module and the "status" dashboard. The dashboard also provides up to date logging of actions and events generated by EG.



## EG REAL TIME REPORTS IN A CORPORATE PORTAL

Track open work orders in real time..

Enterprise Maintenance Reports							Work Order
Item No.	WO#	Description	EQ#	Status	J#	Location	
1	EG-1850	Shooting Hood Insp.	4892-CR2712	OPEN			
2	EG-1991	Shooting Hood Insp.	4892-CR2713	OPEN			
3	EG-1998	Shooting Hood Insp.	4892-CR2714	OPEN			
4	EG-2037	Shooting Hood Insp.	4892-CR2715	OPEN			
5	EG-2068	Shooting Hood Insp.	4892-CR2716	OPEN			
6	EG-2129	Shooting Hood Insp.	4892-CR2717	OPEN			
7	EG-2170	Shooting Hood Insp.	4892-CR2718	OPEN			
8	EG-2211	Checking Accumula	4894-TS4600	OPEN			
9	EG-2275	Checking Accumula	4894-TS4605	OPEN			
10	EG-2310	Checking Accumula	4894-TS4610	OPEN			
11	EG-2444	Checking Accumula	4895-FC5203	OPEN			
12	EG-2458	Checking Accumula	4893-MM3083	OPEN			

### EG HARDWARE REQUIREMENTS

Current generation Server with 2 CPUs

Min. 4 GB RAM, 50 GB

### EG SOFTWARE REQUIREMENTS

Windows 2008/2003/XP

SQL Server 2008/2005

IE 6.0 or above

IIS Server 5.0 or above

MSMQ

Dot net Framework 2.0 or above